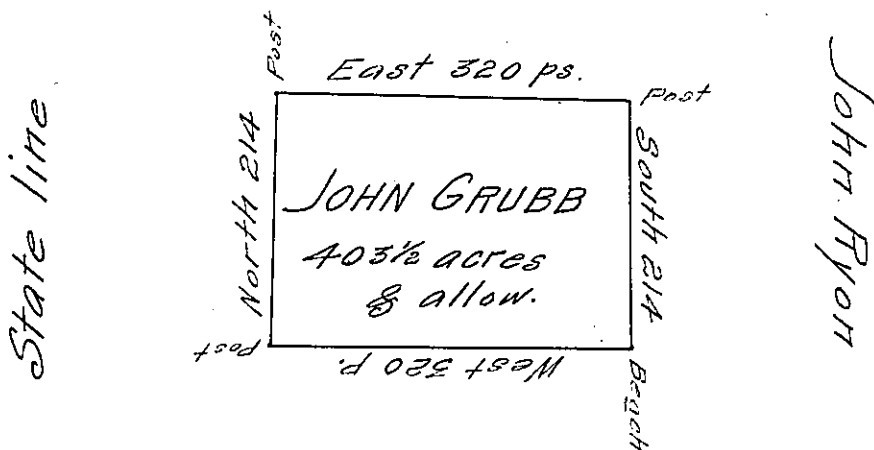


Stephen Grubb



Frederick Grubb

A Draft of a tract of land Called —  
 Situate on the Waters of Concate Creek in  
 the County of <sup>Obl.</sup> Almany, Adjoining land of  
 Frederick Grubb & others, Surveyed the 6<sup>th</sup>  
 day of July 1795 in persuance of an Improve-  
 ment dated the 10<sup>th</sup> day of ~~April~~ March  
 1795. Containing 403 1/2<sup>ac</sup> & allowance &c

Tho<sup>s</sup> Rees D.S.

To Dan! Brodhead Esquire  
 Surveyor Gen!.

IN TESTIMONY that the above is a copy of the original remaining on file in  
 the Department of Internal Affairs of Pennsylvania, made  
 conformably to an Act of Assembly approved the 16th day of  
 February, 1833, I have hereunto set my Hand and caused  
 the Seal of said Department to be affixed at Harrisburg,  
 this thirty-first day of August 1906

*Isaac R. Brown*  
 Secretary of Internal Affairs.